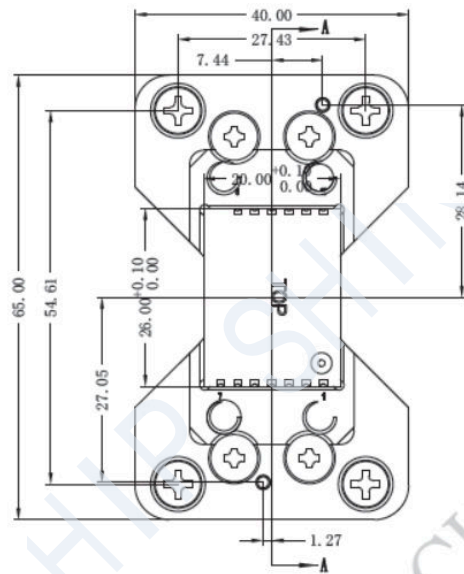
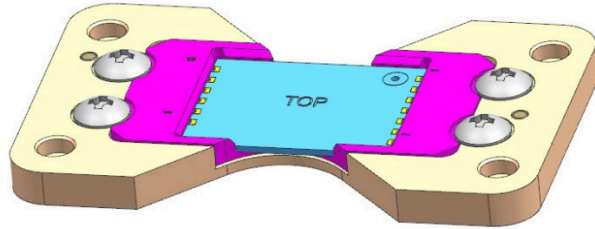


# RF TEST MODULE —— SC-HK-01

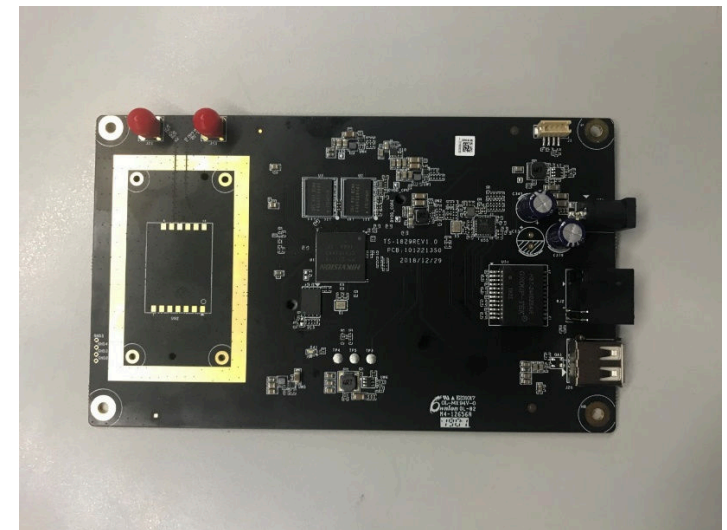


## Technical parameters:

1. Probe model: SP058HD036-25G-3.2
2. Needle plate material: PEEK
3. Rated current of probe: 2A
4. probe resistance: MAX. 100 m  $\Omega$
5. Elastic force of probe: 25g  $\pm$  20% @ 0.5mm
6. Test spacing: 0.5mm
7. Temperature: -25C ~ 85C°

## Requirements for RF test module:

1. Can quickly pick up and place modules to be tested;
2. Can accurately locate the module to be tested, and ensure the repeated positioning accuracy of small modules;
3. SOCKET has anti-freeze design to prevent the placement of small modules;
4. SOCKET shall be convenient for maintenance and replacement of internal probe;
5. RF frequency: 6GHz



CHIP SHINE